

Seeking the Moral Community: Religion, Deviance, and Well- Being Among American University Students

Jerome R. Koch
Alden E. Roberts
Myrna L. Armstrong
Texas Tech University

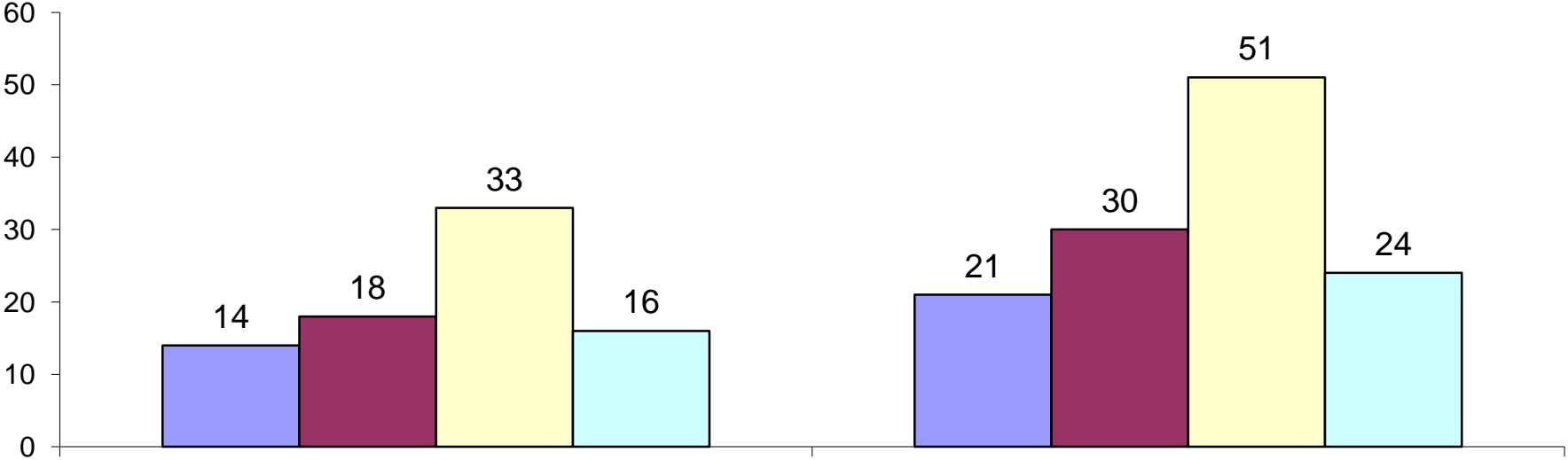
Some Preliminary Findings - Spring, 2011

General Characteristics

The Sample:

- South State University. n=567
 - Southern Baptist University. n=531
 - Southeast Private University. n=147
 - Southeast State University. n=328
-
- 84% Ages 18-20
 - 65% White
 - 62% Female
- Total N = 1563
Response Rate = 82%

Parents With Graduate Degree



Mothers

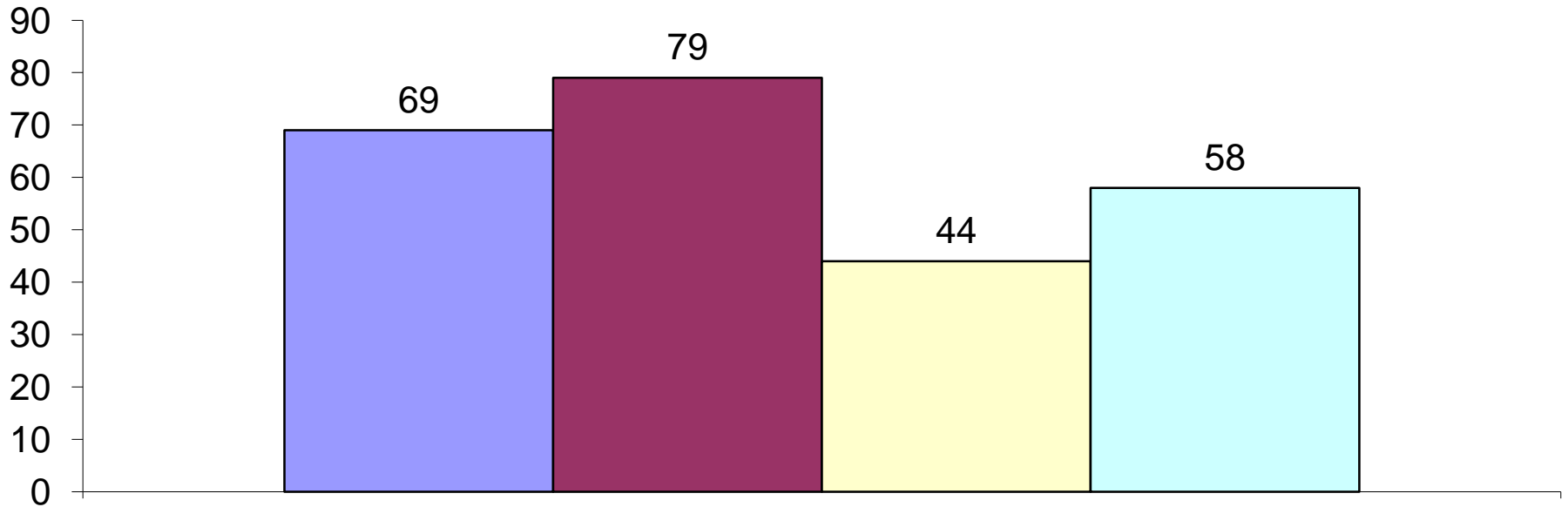
Fathers

Comparative Percentages



Religious Belief and Practice

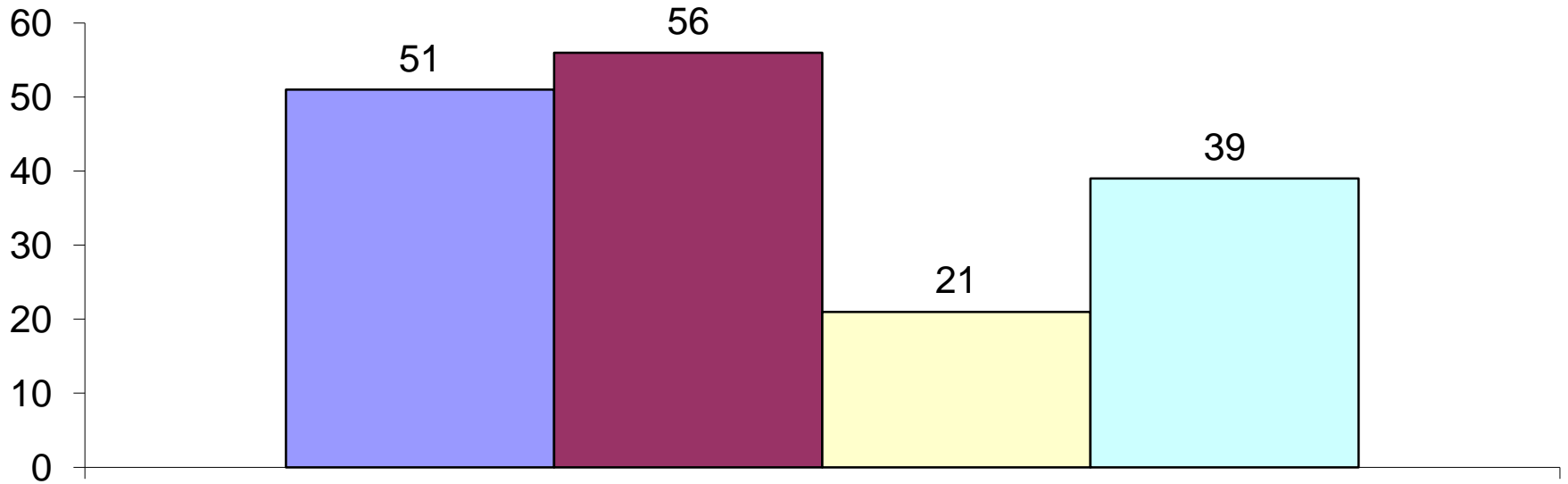
Religious Faith Moderately or Very Strong



Comparative Percentages



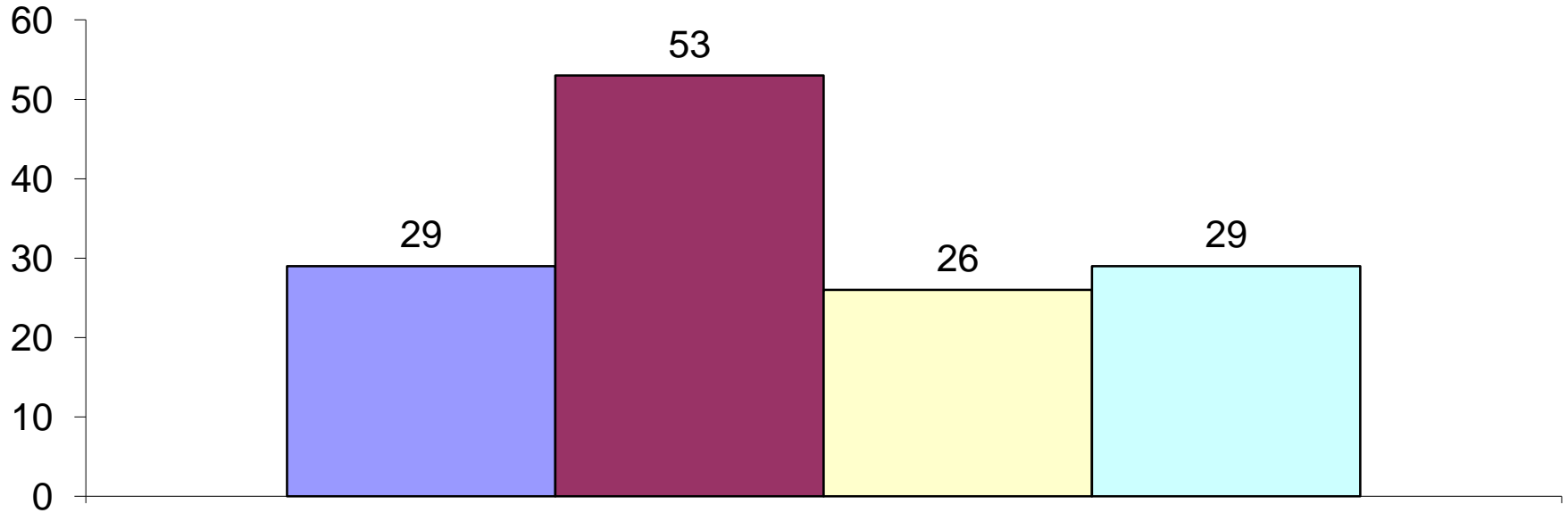
Strongly Agree/Agree – Bible is Infallible



Comparative Percentages

■ South State ■ Southern Baptist ■ SE Private ■ SE State

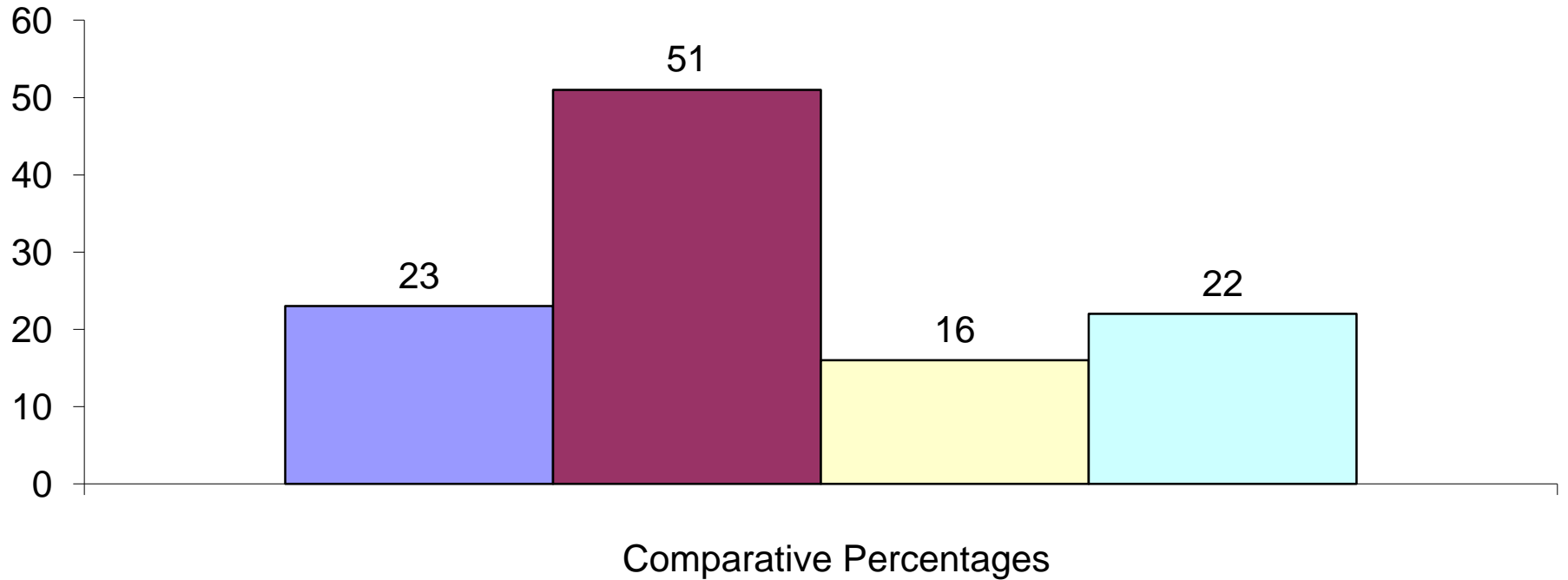
Pray Daily or More Often



Comparative Percentages

■ South State ■ Southern Baptist ■ SE Private ■ SE State

Worship Weekly or More Often



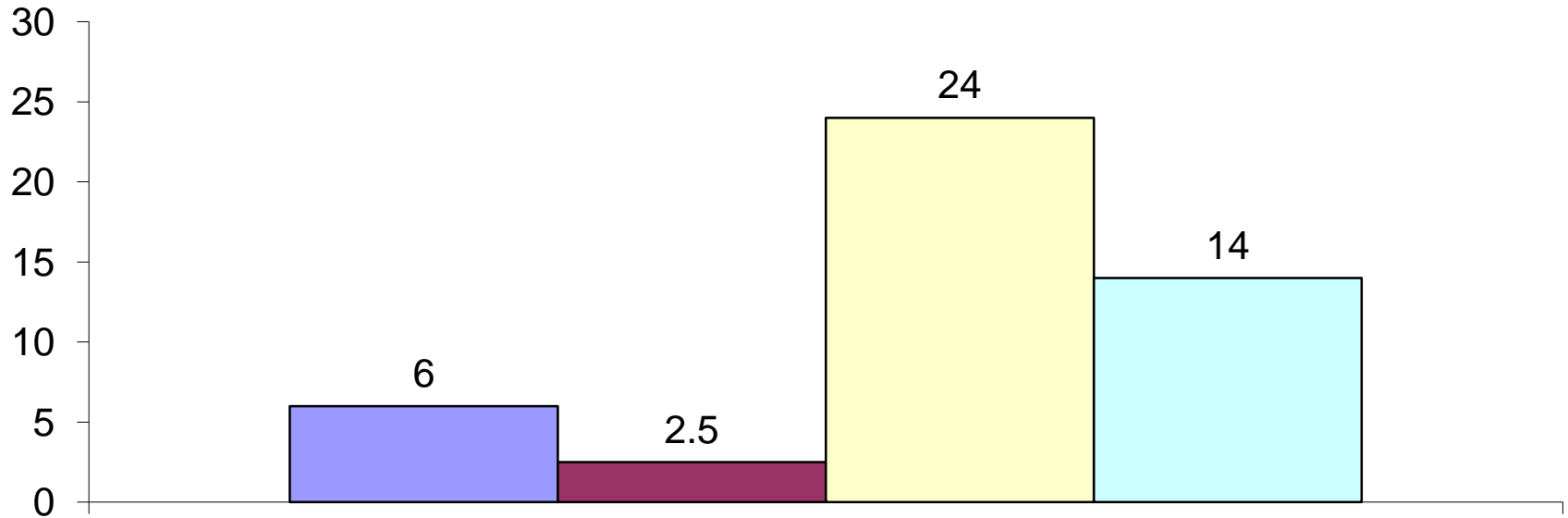
■ South State

■ Southern Baptist

■ SE Private

■ SE State

“Most of my friends are NOT religious at all.”

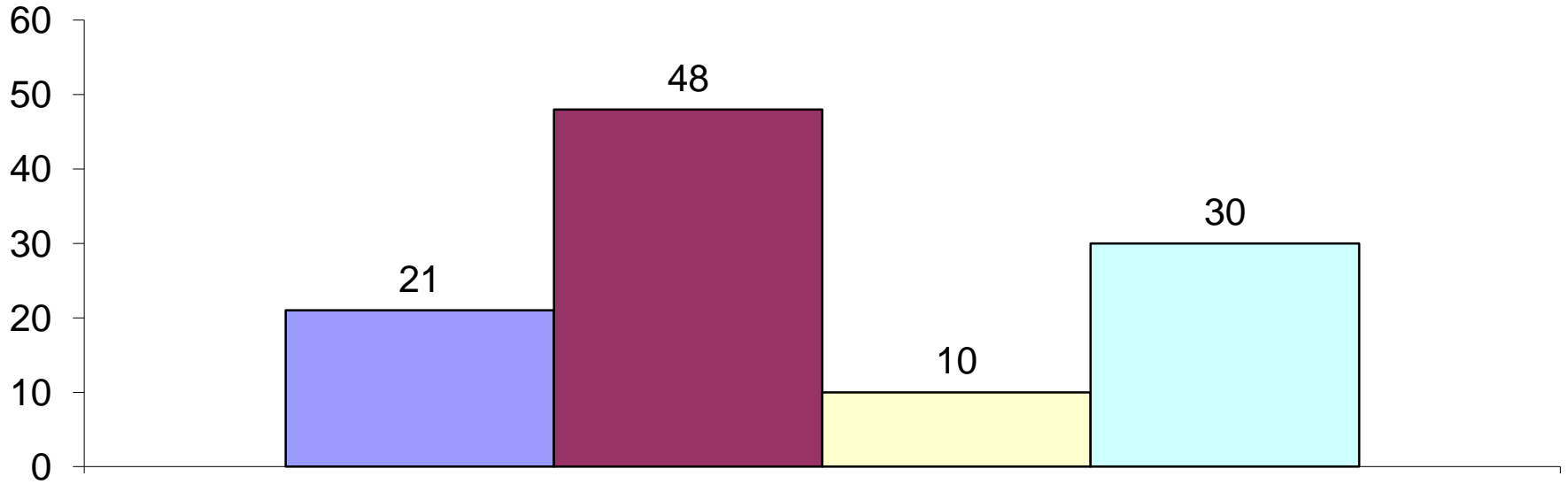


Comparative Percentages

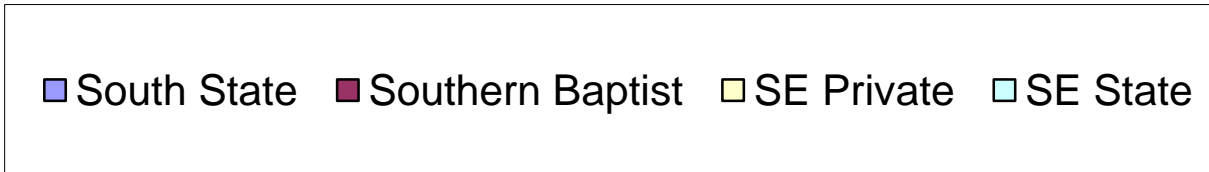
■ South State ■ Southern Baptist ■ SE Private ■ SE State

Social Behavior

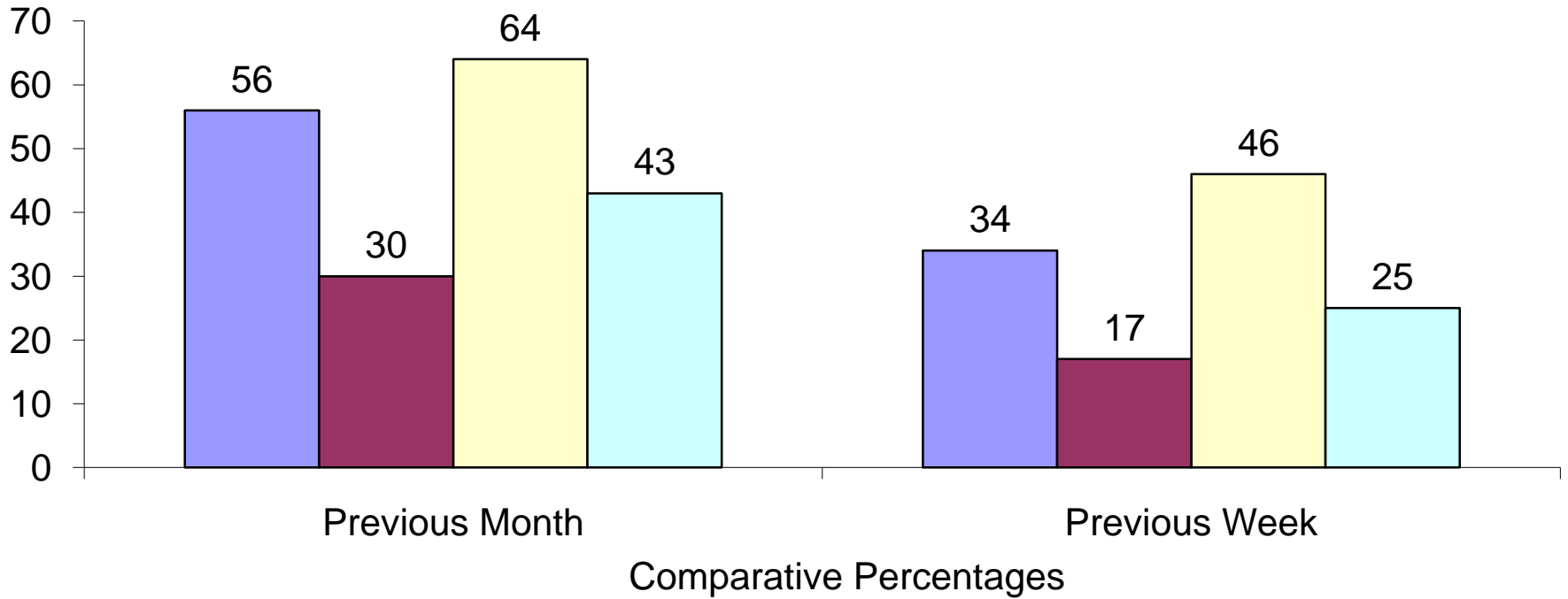
Never Use Alcohol



Comparative Percentages

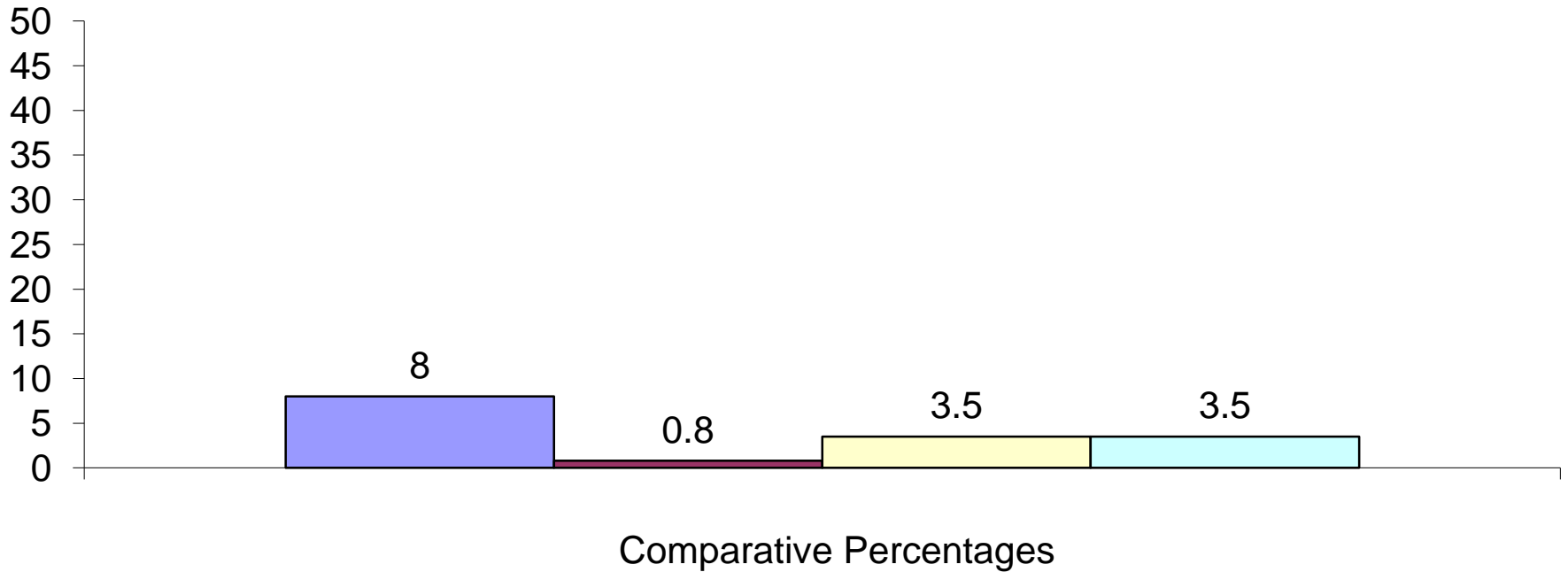


Binge Drinking – 5+ Drinks on One Occasion



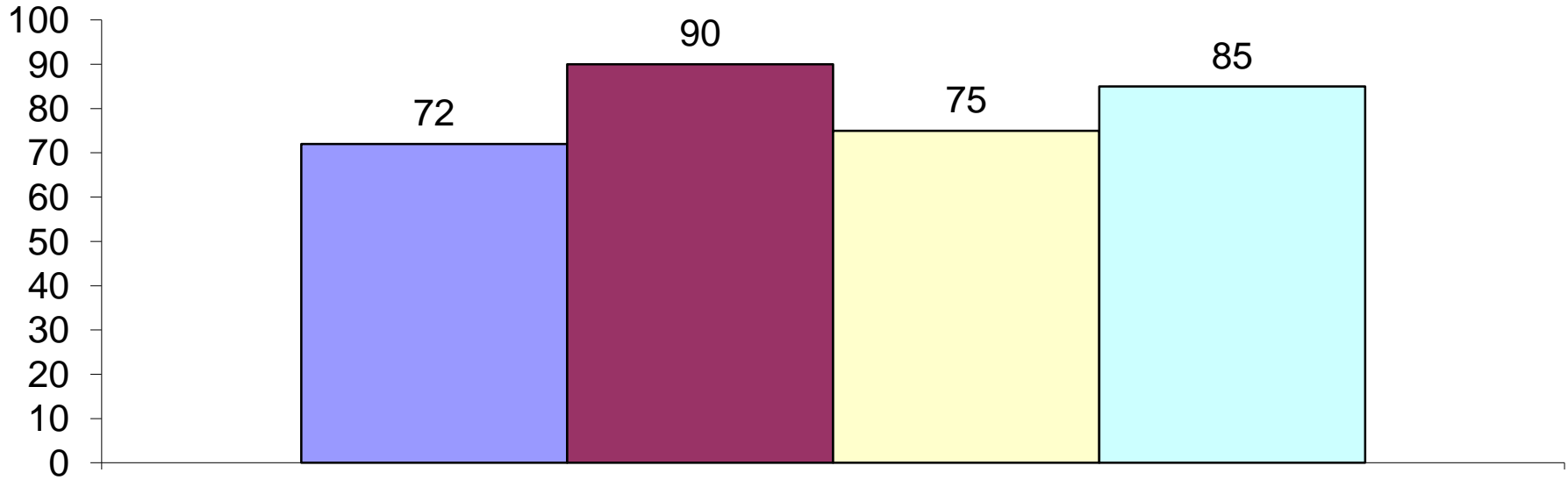
■ South State ■ Southern Baptist ■ SE Private ■ SE State

Daily Alcohol Consumption

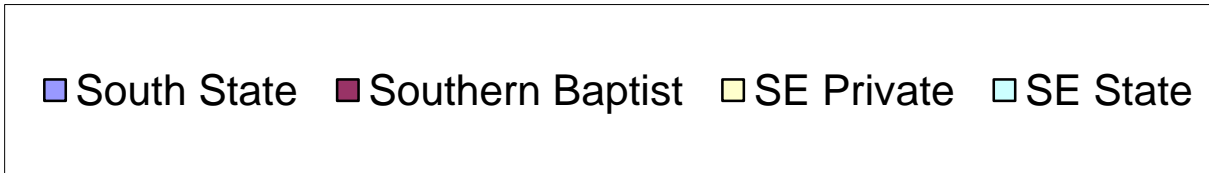


■ South State ■ Southern Baptist ■ SE Private ■ SE State

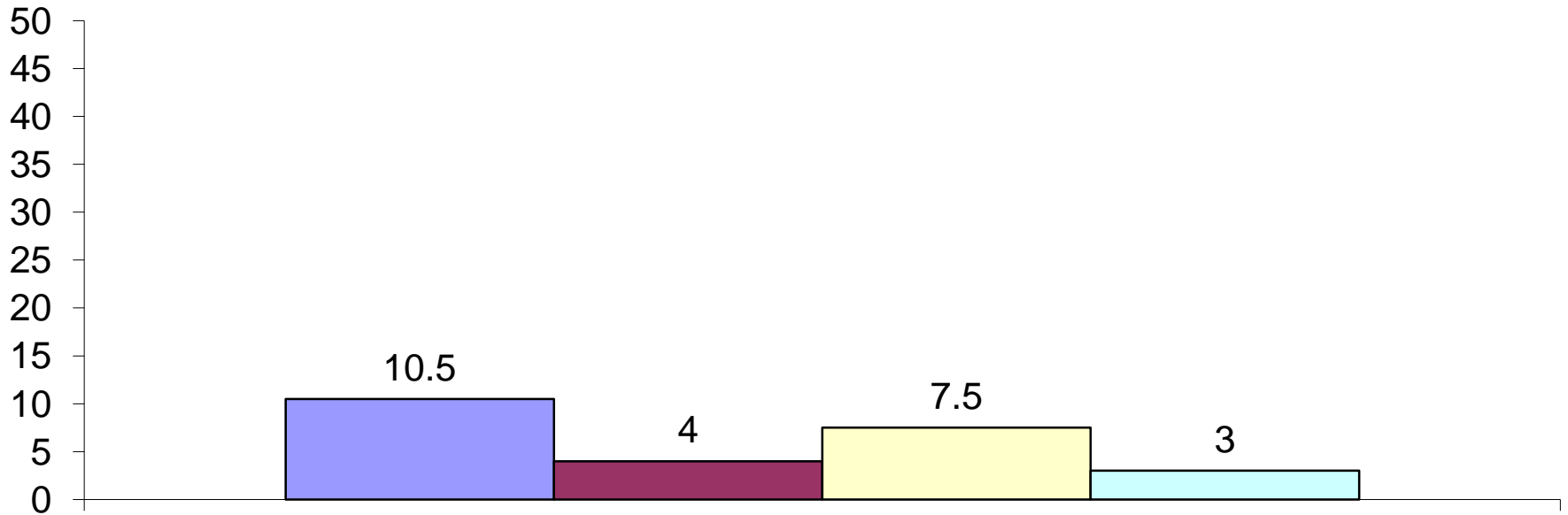
Never Use Marijuana



Comparative Percentages



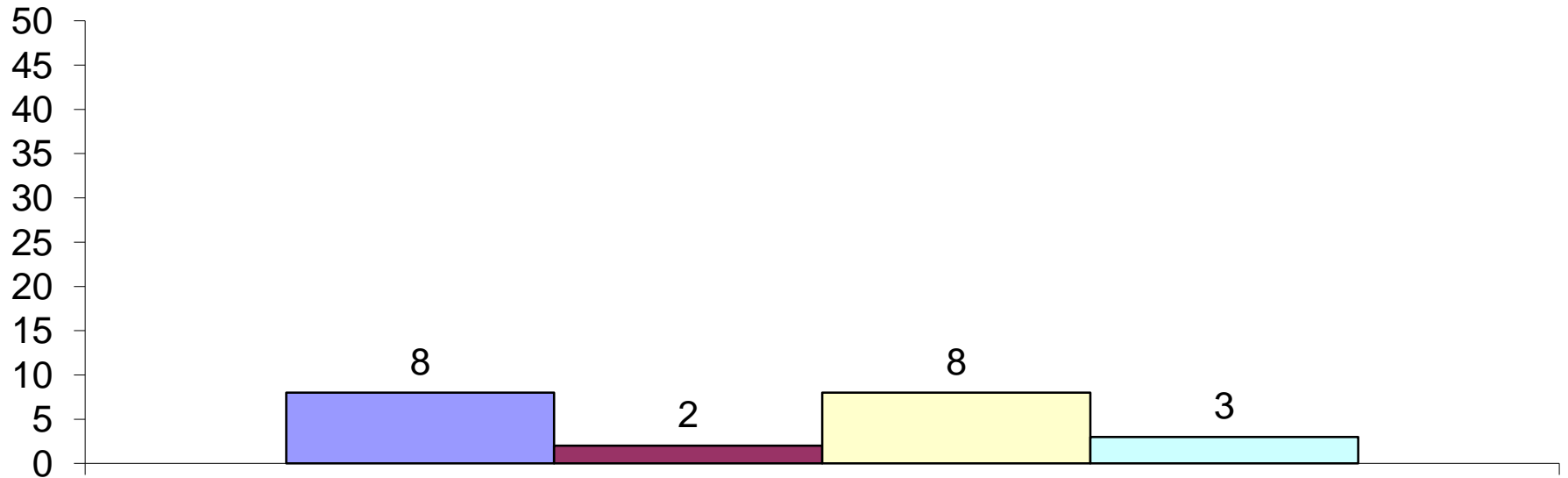
Marijuana Use – 10+ Times/Month



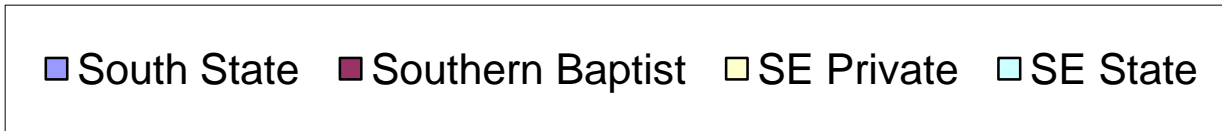
Comparative Percentages

■ South State ■ Southern Baptist ■ SE Private ■ SE State

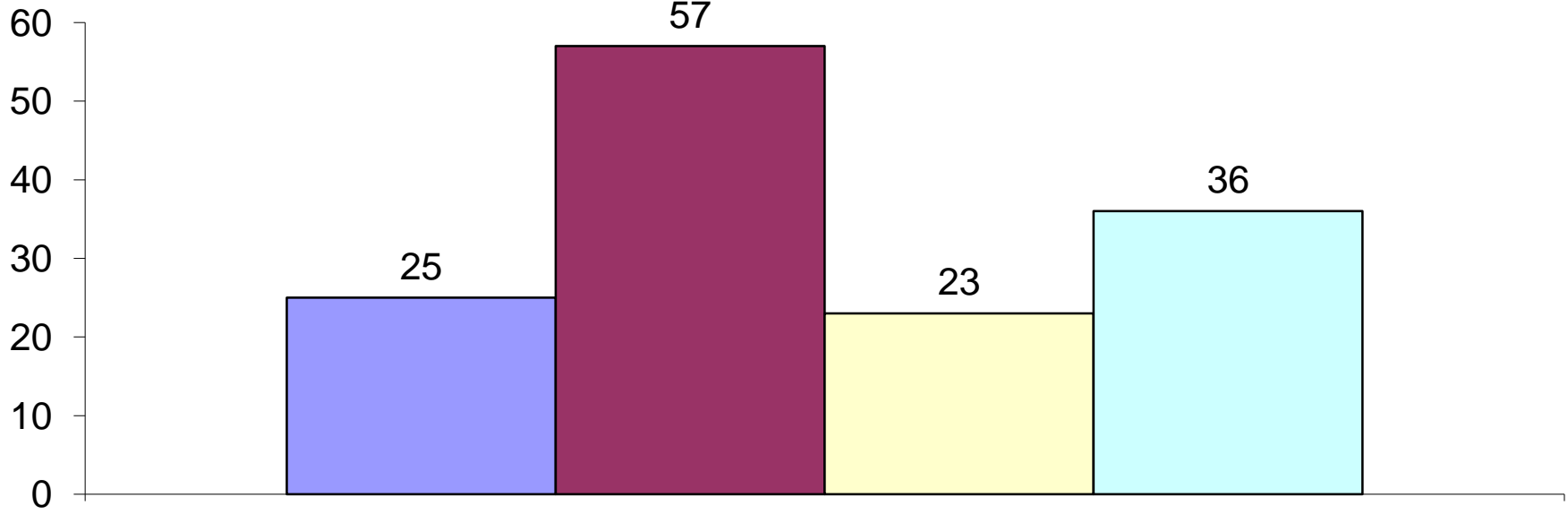
Other Illegal Drug Use - Monthly



Comparative Percentages



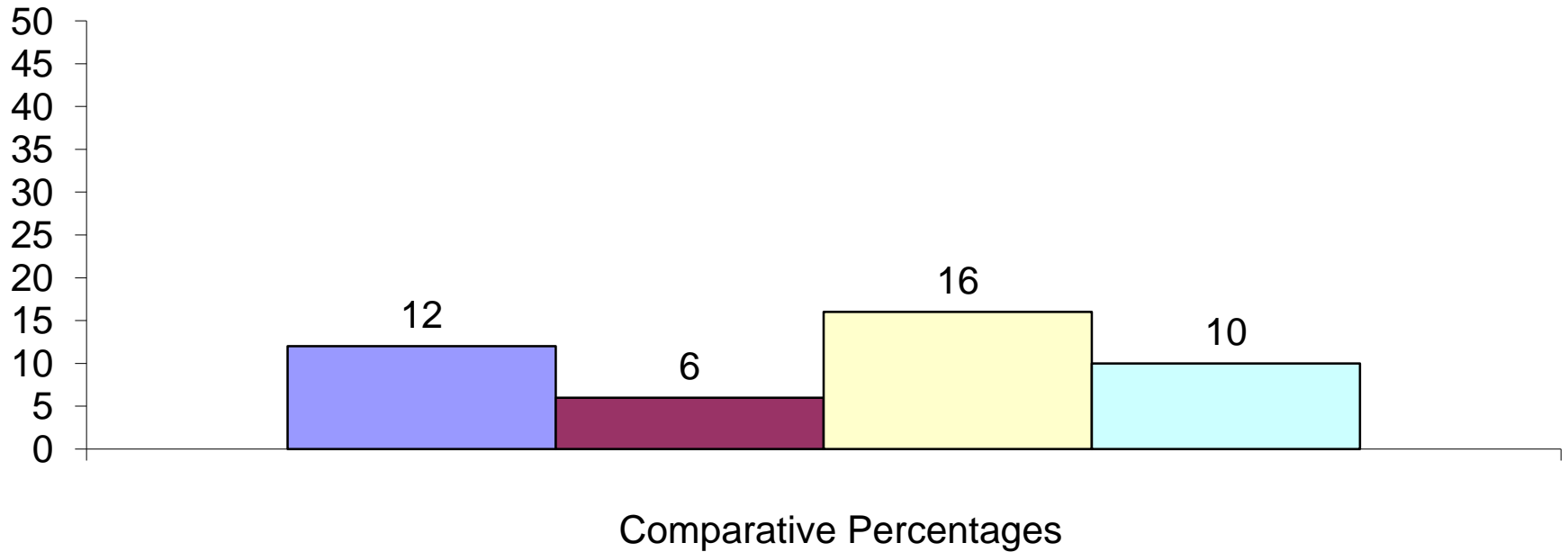
Never Had Sexual Intercourse



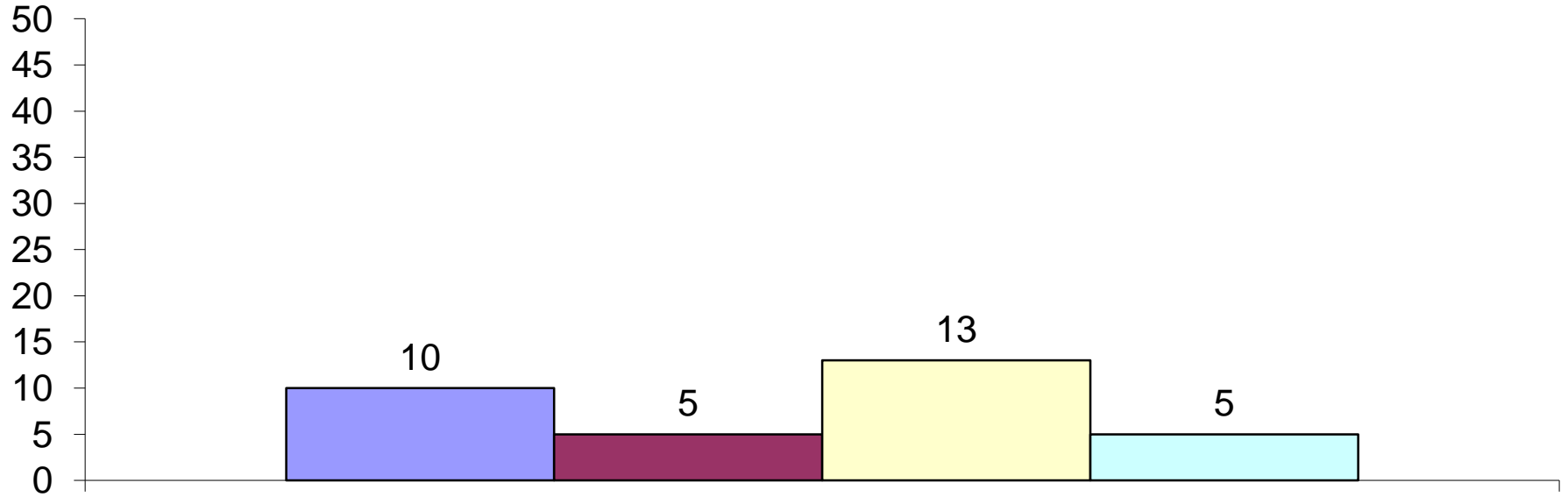
Comparative Percentages



Four or More Sex Partners - Previous Year



Nine or More Sex Partners - Lifetime

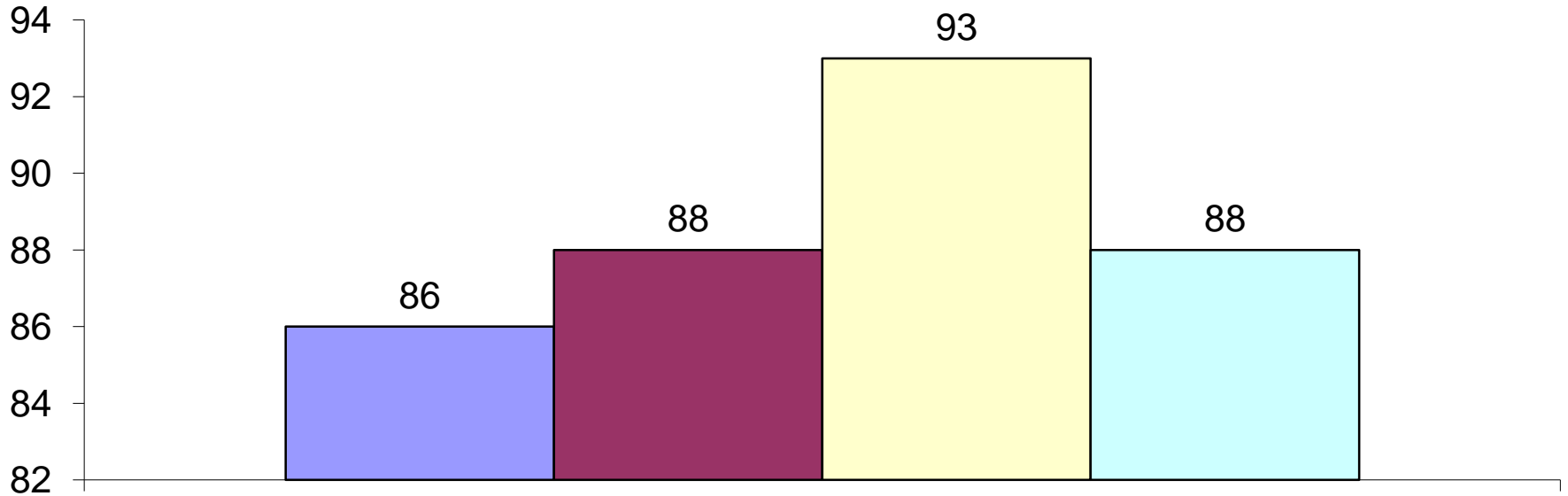


Comparative Percentages

■ South State ■ Southern Baptist ■ SE Private ■ SE State

Well-Being – Or Not

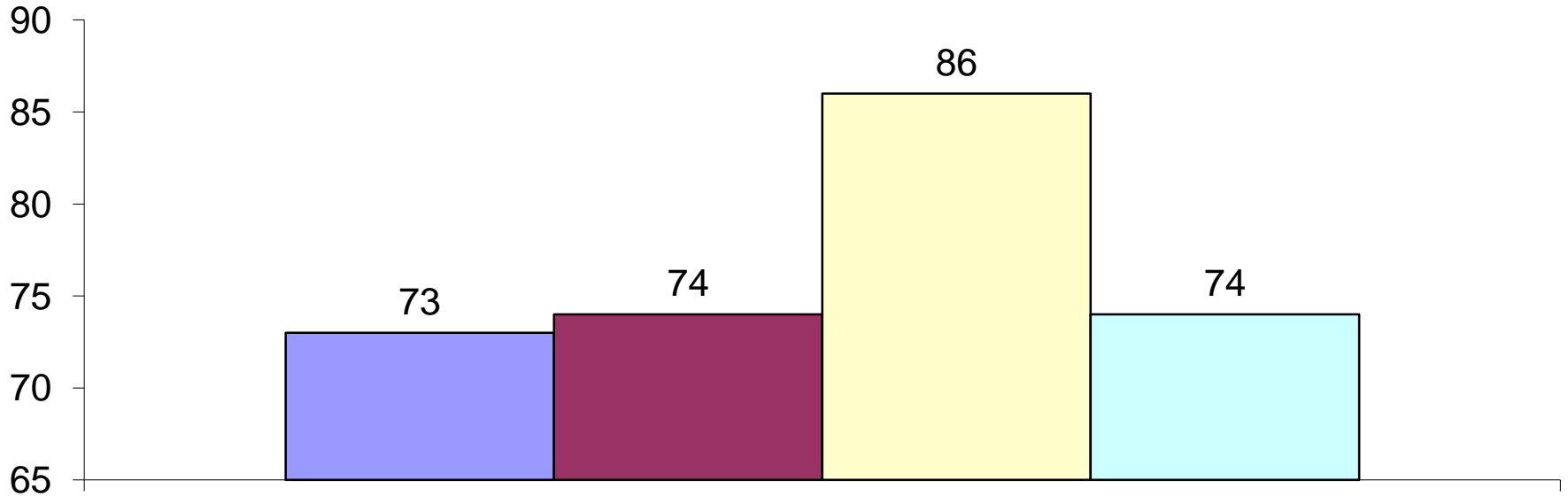
Strongly Agree/Agree: "I'm a person of worth."



Comparative Percentages

■ South State ■ Southern Baptist ■ SE Private ■ SE State

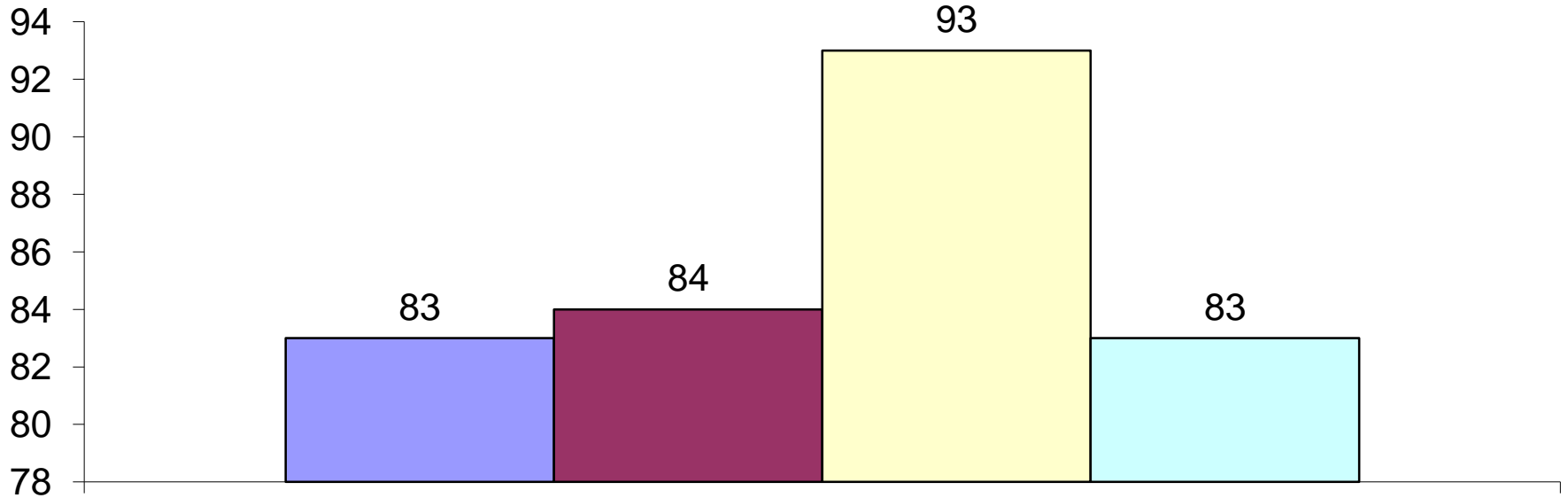
Strongly Agree/Agree: "I'm satisfied with myself."



Comparative Percentages

■ South State ■ Southern Baptist ■ SE Private ■ SE State

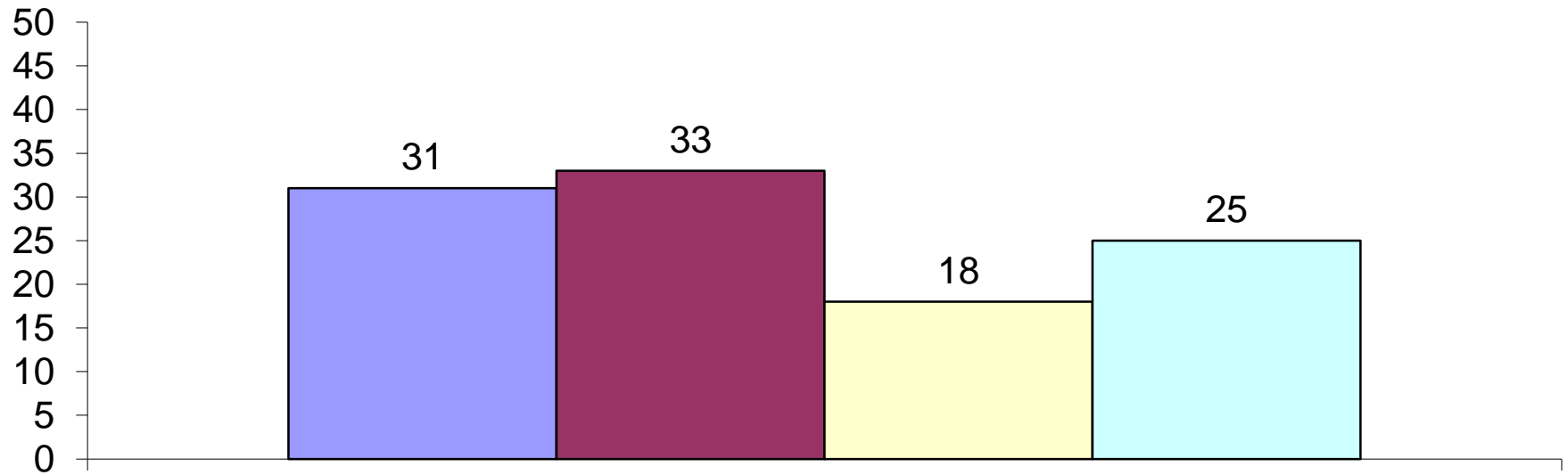
Strongly Agree/Agree: "I am able to do things as well as most other people"



Comparative Percentages

■ South State ■ Southern Baptist ■ SE Private ■ SE State

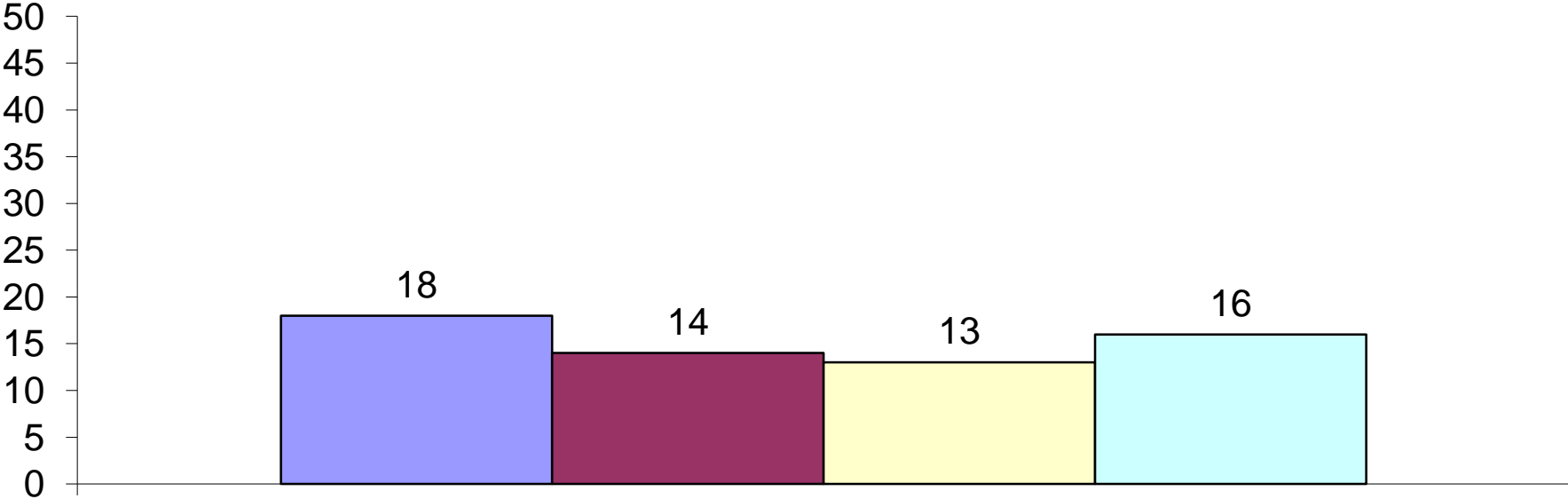
Moderately or Very Dissatisfied with (my) Body



Comparative Percentages

■ South State ■ Southern Baptist ■ SE Private ■ SE State

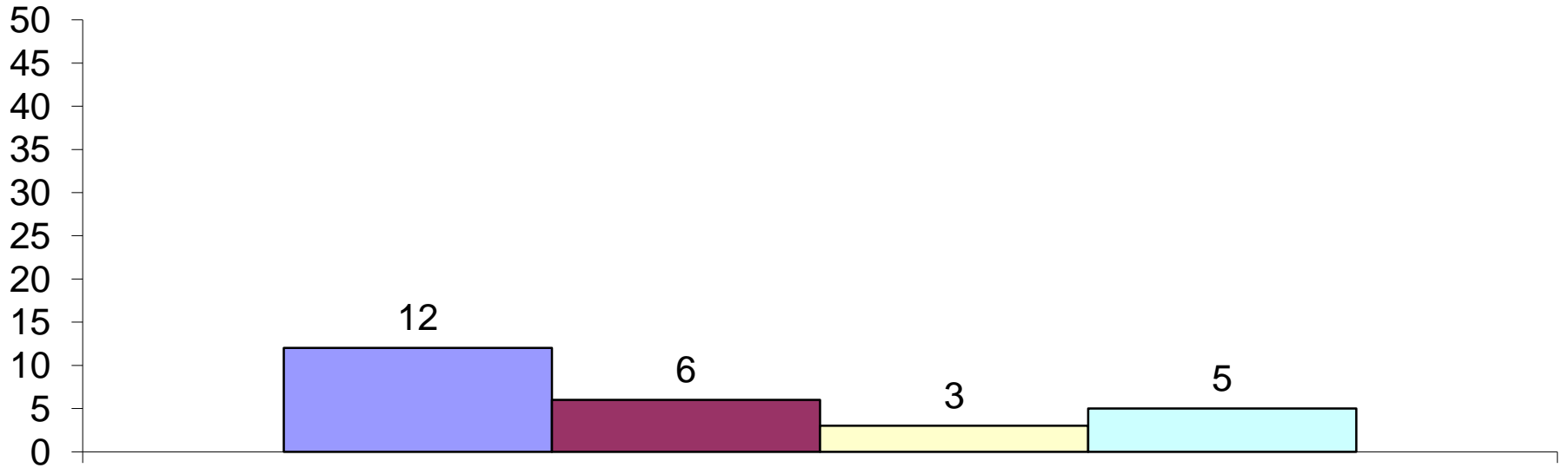
Feel Sad Occasionally or Most of the Time



Comparative Percentages



Attempted Suicide



Comparative Percentages

■ South State ■ Southern Baptist ■ SE Private ■ SE State

